



## DC-7 <sup>NEW</sup> Diagnostic Ultrasound System

### Advanced technology:

- THI: phased inversion harmonic imaging delivers optimal contrast resolution and better noise rejection
- Adaptive frame averaging: reduces acoustic artifacts with uncompromised frame rates, brings you diagnostic confidence

### Complete series of probes:

- Phased array probes: P4-2, P7-3, P12-4
- Linear probes: 7L4A, L7-3, L11-4, L12-4, L14-6

### Complete versatility:

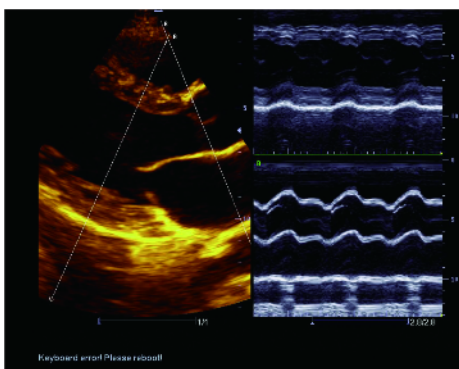
- Tissue Doppler Imaging: extracts tissue motion signals for quantitative analysis on myocardial movement, evaluates cardiac function more precisely
- Free Xros™: anatomic M-mode, offers accuracy and high efficiency with maximum three off-axis sample lines to obtain more valuable diagnostic information
- Color M-mode: helps to understand the relationship between myocardial movement and hemodynamics
- IMT: automatically detects and measures the carotid intima-media thickness, which could be an early sign of atherosclerosis
- Auto LV trace: auto border detection and calculation helps to assess LV function with less time and more accuracy

## DC-7

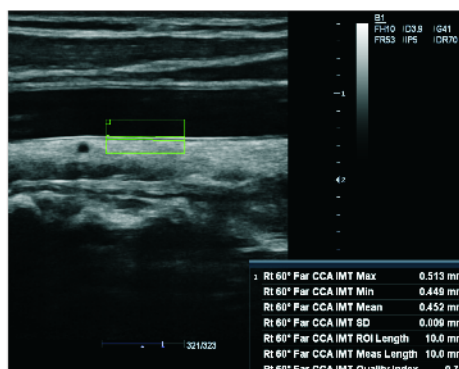
### Diagnostic Ultrasound System

#### Cardiovascular

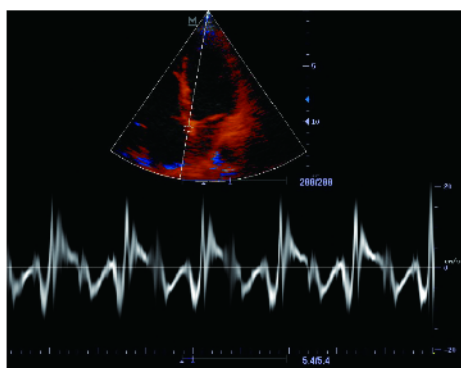
DC-7 can provide excellent performance in cardiac and vascular in many aspects, such as rapid system response, razor-sharp image quality, advanced quantitative analysis and abundant report packages. With these advantages, DC-7 brings you more benefits and solutions in diagnose more way than ever.



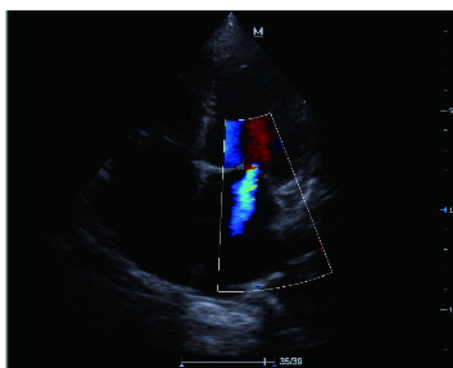
Anatomic M-mode



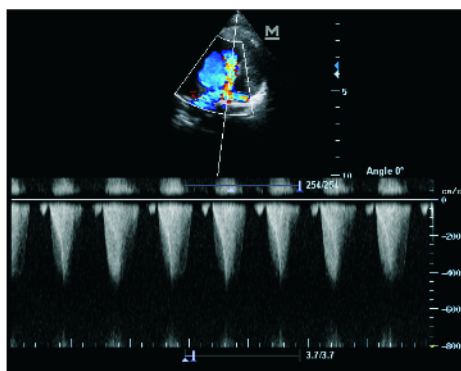
Auto IMT



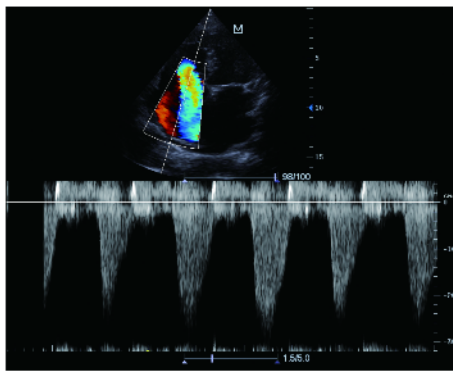
TDI PW function



Mitral regurgitation



Pulmonary stenosis



Tricuspid regurgitation

DISTRIBUTOR:



MINDRAY is a trademark of Shenzhen Mindray Bio-Medical Electronics Co., Ltd. Specifications subject to changes without prior notice.  
 © 2010 Shenzhen Mindray Bio-Medical Electronics Co., Ltd. All rights reserved.  
 P/N: ENG-DC-7-CAR-21107B5X2-20100722

**mindray**

Mindray is listed on the NYSE under the symbol "MR"  
 Mindray Building, Keji 12th Road South, High-tech Industrial Park,  
 Nanshan, Shenzhen 518057, P.R. China  
 Tel: +86 755 26582888 Fax: +86 755 26582680  
 E-mail: intl-market@mindray.com Website: www.mindray.com



# DC-7

NEW

## Diagnostic Ultrasound System

### New applications:

- 3D/4D imaging: offers you the greatest flexibility to fully view, and better analyzes the VOI with enhanced diagnostic accuracy
- New transvaginal probe: larger view of angle and better ergonomic design make your scanning more comfortable

### Easy-to-use:

- Smart OB: automatic measurement function with manual correction method, greatly improves the exam procedure
- Zoom function: automatic combination of large-scale pan zoom and spot zoom, provides the best zoom effect to visualize small structures
- Fetus analysis: various OB tables and trend graph for analyzing fetal growth easily
- Complete measurement items and formulae with professional report template are provided specifically for OB/GYN exams

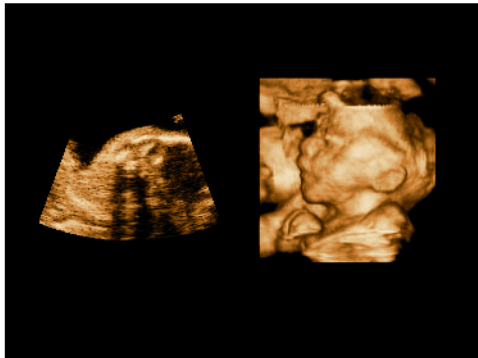
**mindray**  
healthcare within reach

# DC-7

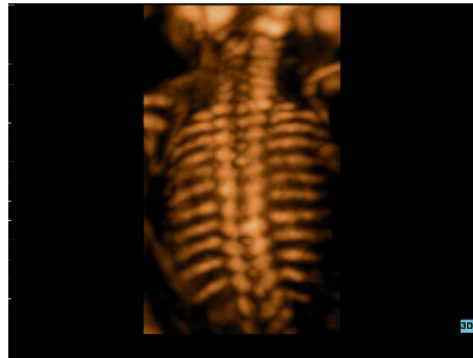
## Diagnostic Ultrasound System

### OB & GYN

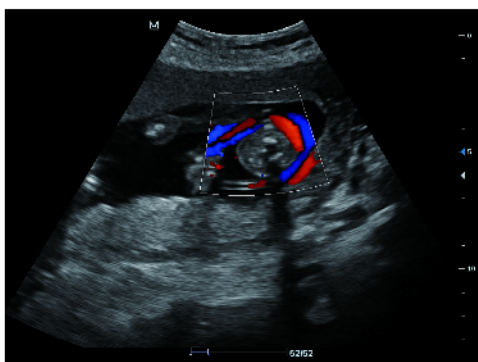
The DC-7 opens the door for unique concerns of women health and fetal care. With value added performance, DC-7 can meet the challenges from routine OB/GYN exams to further research studies, paving the way for the new experience of expertise.



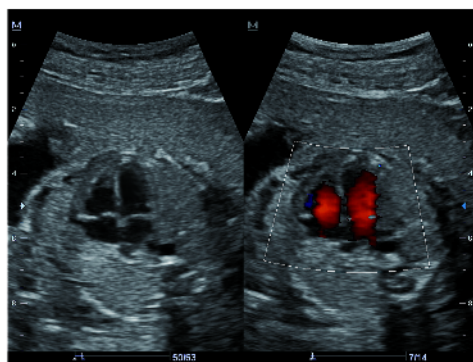
Fetal face (24 weeks), surface rendering



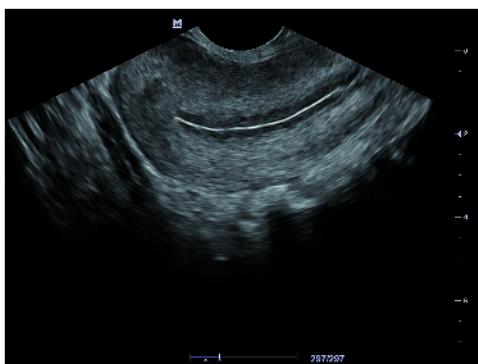
Fetal spine, max rendering



Umbilical cord



Four-chamber view of fetal heart



Endometrium canal, with transvaginal probe



Gestation sac

DISTRIBUTOR:



MINDRAY is a trademark of Shenzhen Mindray Bio-Medical Electronics Co., Ltd. Specifications subject to changes without prior notice.  
 © 2010 Shenzhen Mindray Bio-Medical Electronics Co., Ltd. All rights reserved.  
 P/N: ENG-DC-7-OB-210288X7-2B100521

**mindray**

Mindray is listed on the NYSE under the symbol "MR"  
 Mindray Building, Keji 12th Road South, High-tech Industrial Park,  
 Nanshan, Shenzhen 518057, P.R. China  
 Tel: +86 755 26582888 Fax: +86 755 26582680  
 E-mail: intl-market@mindray.com Website: www.mindray.com



## DC-7

NEW

### Diagnostic Ultrasound System

#### Advanced technology:

- iClear™: speckle reduction technology improves contrast resolution without compromising spatial resolution
- iBeam™: reduces random noise and enhances border differentiation
- Frequency compounding imaging: achieves the excellent balance between spatial resolution and penetration at depth

#### Wide clinical applications:

- Contrast imaging: enhances visualization of pathological structures
- iScape™ view: provides extended field of view with real-time alignment
- IMT: automatically calculates and analyzes the carotid intima-media thickness
- Fifty specific exam modes, more than twenty probes
- Rich series of biopsy devices, including both disposable and reusable needle-guided brackets

#### Streamlined workflow:

- Fast system response: keeps you focusing on images and patients
- Four active probe ports: saves probe switch time between any different exams
- DICOM3.0 (Storage, Print, DIR, Worklist, MPPS, HIS, RIS)

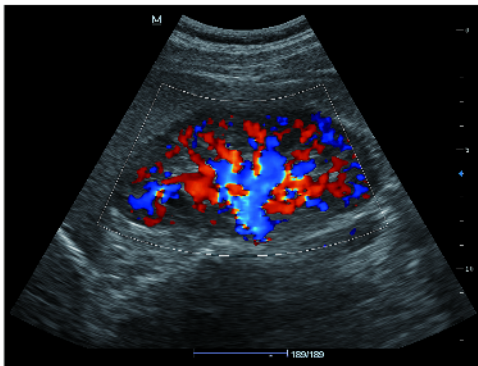
**mindray**  
healthcare within reach

# DC-7

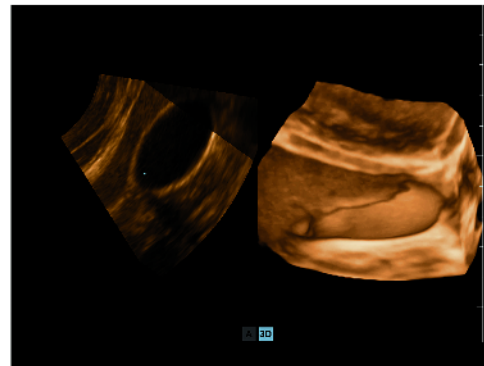
## Diagnostic Ultrasound System

### Radiology

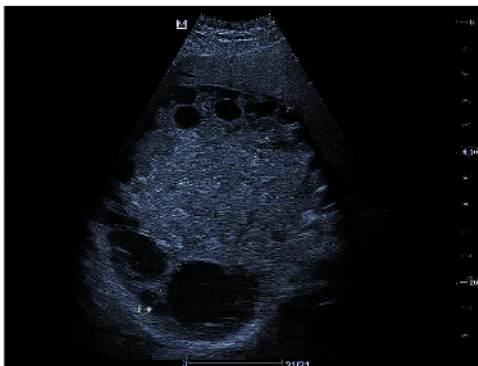
The DC-7 provides the versatility and premium image quality needed across a wide range of patients and exam types, from deep abdominal to superficial small parts. With streamlined workflow, DC-7 makes your scanning comfortable and productive.



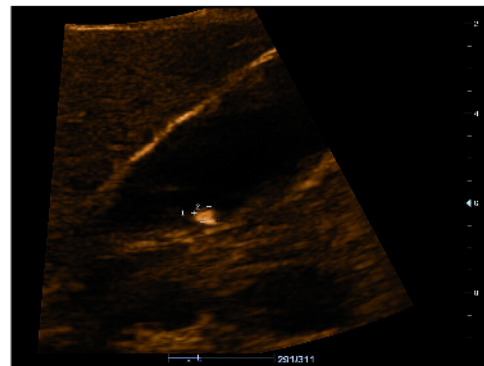
Kidney perfusion, frequency compounding technology



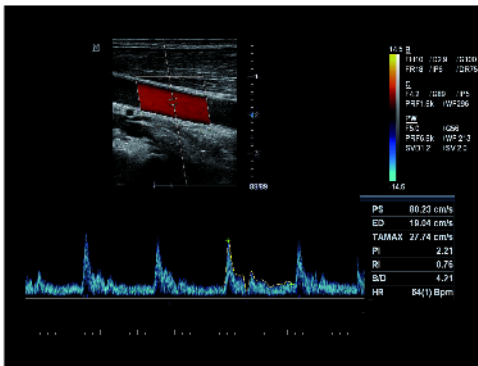
Gallbladder



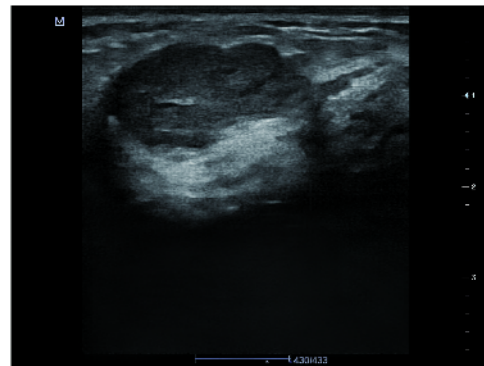
Hepatic echinococcosis, iClear™ function



GB stone of 0.36cm, THI technology



Carotid artery, spectrum auto calculation



Breast mass, iBeam™ technology

DISTRIBUTOR:



MINDRAY is a trademark of Shenzhen Mindray Bio-Medical Electronics Co., Ltd. Specifications subject to changes without prior notice.  
 © 2010 Shenzhen Mindray Bio-Medical Electronics Co., Ltd. All rights reserved.  
 P/N: ENG-DC-7-RAD-210285X2-20100223

**mindray**

Mindray is listed on the NYSE under the symbol "MR"  
 Mindray Building, Keji 12th Road South, High-tech Industrial Park,  
 Nanshan, Shenzhen 518057, P.R. China  
 Tel: +86 755 26582888 Fax: +86 755 26582680  
 E-mail: intl-market@mindray.com Website: www.mindray.com