

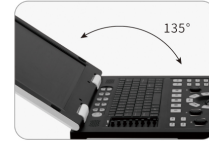
RS-N50

Full Digital Laptop Ultrasound System



Main Features:

- 15 inches LCD display zone for large image size, with high quality.
- Probe Interface: Dual probe interface, with automatic identification function
- ARM platform, fast computing, HD imaging
- Abundant probe sets, suitable for different parts.
- Battery Capacity: Independent battery compartment /removable lithium battery /5200 mAh
- Four encoders, knob design, quick and convenient operation
- Support multi-language switching
- Movie playback: 256 frames, can be played back frame by frame and pause playback, pause playback can be used for image preservation and measurement
- Measurement: Professional measurement software;
- Host size: 360mm (L) × 355mm (W) × 65mm (H)



Extends to 135 degrees



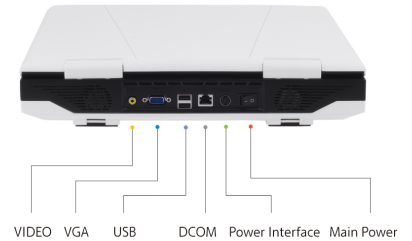
Backlight button, convenient to operate in darkroom



convenient to carry



Independent battery compartment



Applicable object:

Middle and small animals, liver, gallbladder, spleen, kidney, bladder, uterus and other tissues and organs inspection and diagnosis of lesions.
Pregnancy test and measurement of back fat thickness in large animals such as cattle, sheep, horses and pigs.

Abundant probe sets, suitable for different parts

